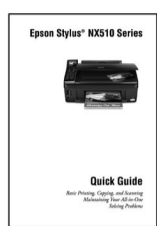
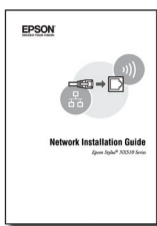
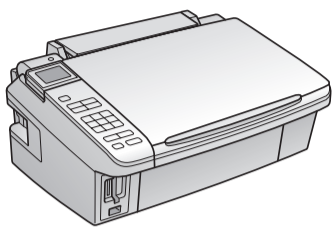
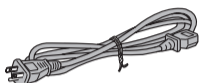


# Epson Stylus® NX510 Series Start Here

## 1 Unpack



(Included for  
Canada only)



Power cord



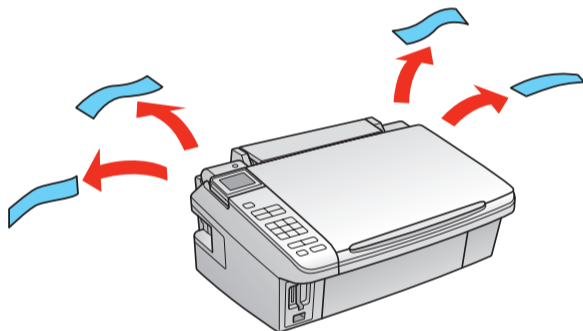
If anything is missing, contact Epson as described on the back.

**Note:** The model name of your product may vary slightly from the one shown above. The included CD and documentation apply to all products in the series.

**Caution:** Do not open ink cartridge packages until you are ready to install the ink. Cartridges are vacuum packed to maintain reliability.

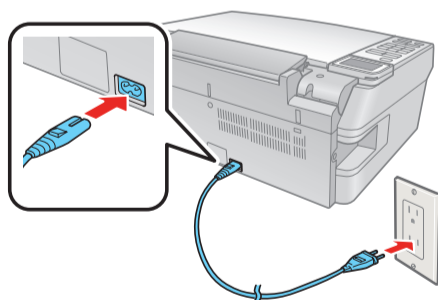
**Canada only:** For French speakers, remove sticker(s) from the backing sheet and place over corresponding text on the control panel.

Remove all protective materials.



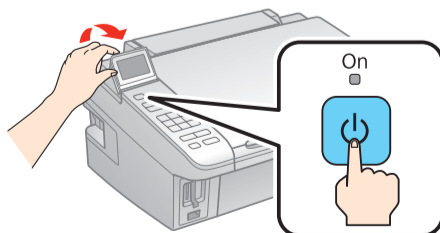
## 2 Turn on and adjust

1 Connect the power cable.



**Caution:** Do not connect to your computer yet.

2 Raise the display screen, then press the **On** button.

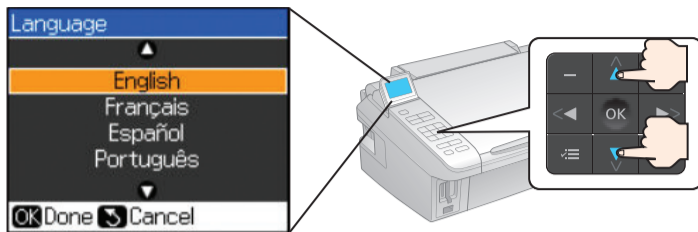


\*411638300\*

# 3

## Select language

Press ▲ or ▼ to select your language, then press OK.

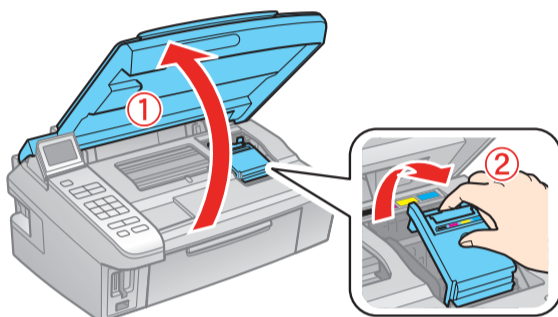


# 4

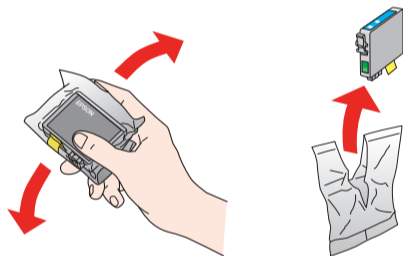
## Install ink cartridges

**Note:** Do not load paper yet.

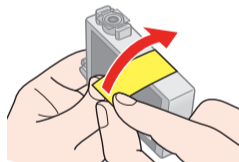
- 1 Lift up the scanner, then open the cartridge cover.



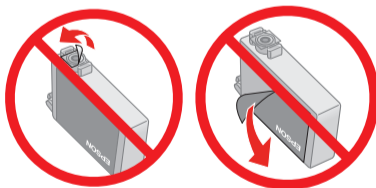
- 2 Shake the ink cartridges gently 4 or 5 times, then unpack them.



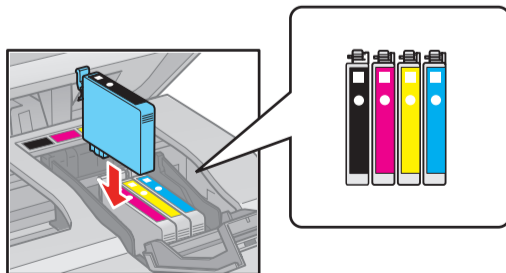
- 3 Remove only the yellow tape from each cartridge.



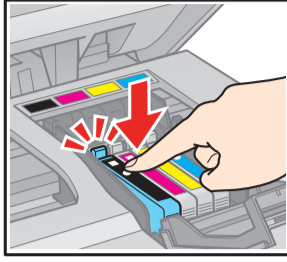
**Caution:** Don't remove any other seals or the cartridges may leak.



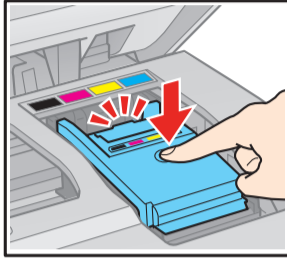
- 4 Insert the cartridges in the holder for each color.



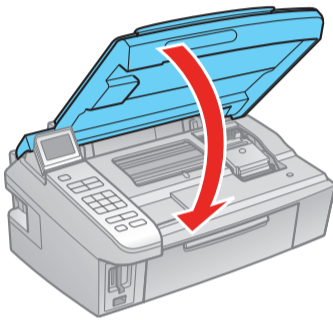
- 5** Press each cartridge down until it clicks.



- 6** Close the ink cartridge cover. Press it down until it clicks.



- 7** Lower the scanner.



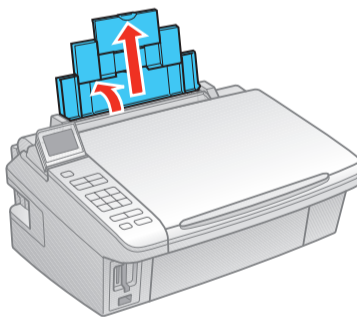
- 8** Press the **OK** button to charge the ink. Charging takes about 3 minutes.

**Note:** Your NX510 Series ships with full cartridges and part of the ink from the first cartridges is used for priming the NX510 Series.

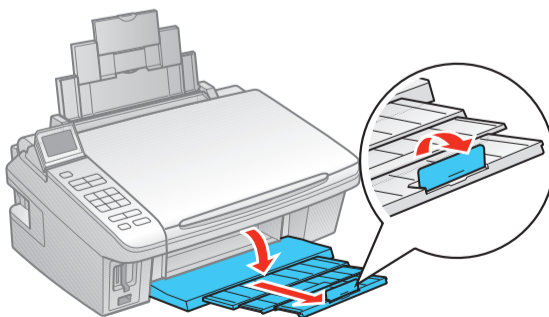
**Caution:** Don't turn off the NX510 Series while the ink system is charging or you'll waste ink.

## 5 Load paper

- 1** Open the paper support and pull up the extensions.

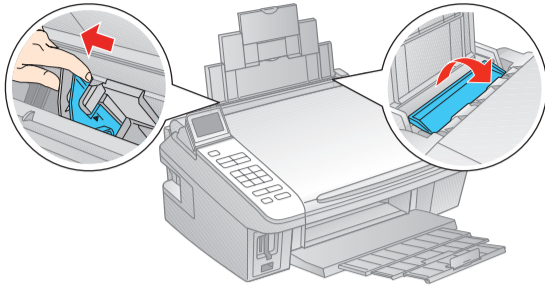


- 2** Open the output tray, pull out the extensions, and raise the stopper.



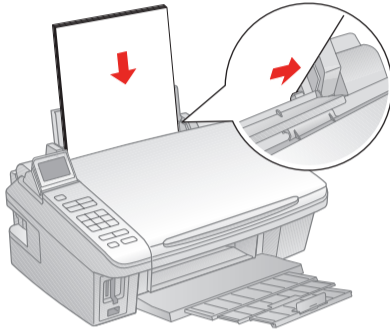
**Note:** If you are using legal-size paper, do not raise the stopper.

- 3** Squeeze the edge guide and slide it left.

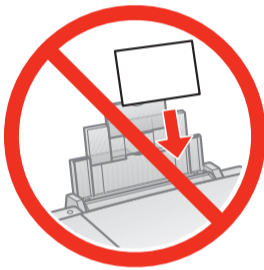


**Tip:** If the feeder guard is in the way, flip it forward.

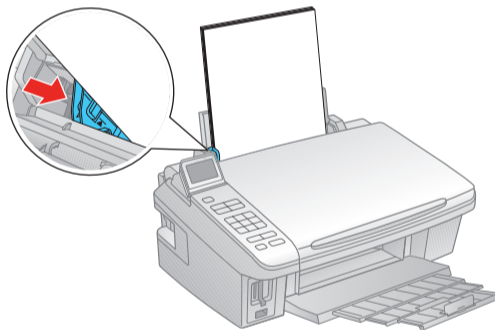
- 4** Load paper against the right edge and behind the tab, with the printable side face up.



**Note:** Don't load the paper sideways; always load it short edge first.



- 5** Slide the edge guide over.



Continue with section 6 to choose your connection type and install software.

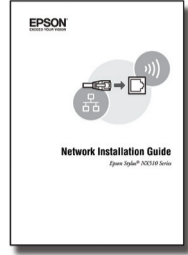
# 6

## Choose your connection



### Network (wireless or wired)

See your **Network Installation Guide**. You can't install your software as described below.



**OR**



### USB connection

Make sure you have a USB cable (not included). Then follow the steps below.

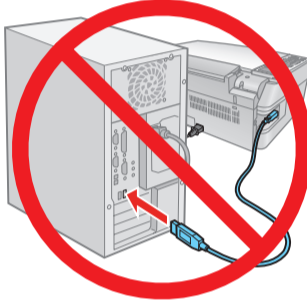


## USB connection

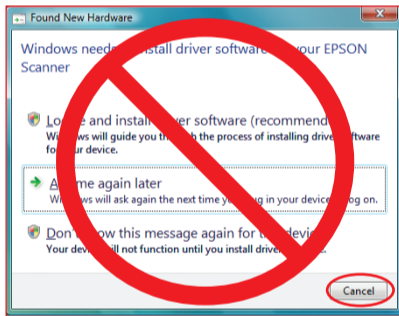
Follow these steps to connect the NX510 Series directly to your computer using a USB cable (not included).

### Windows®

- 1 Make sure the NX510 Series is **NOT CONNECTED** to your computer.

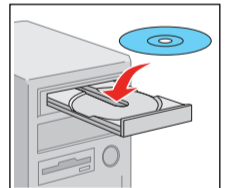


**Note:** If you see a Found New Hardware screen, click **Cancel** and disconnect the USB cable. You can't install your software that way.



- 2 Insert the NX510 Series software CD.

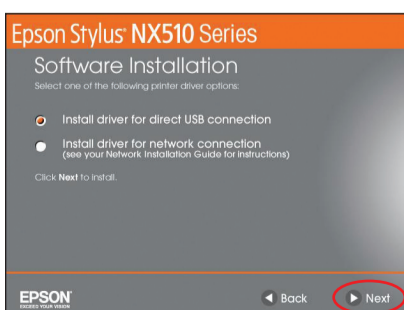
With Windows Vista®, if you see the AutoPlay window, click **Run Setup.exe**. When you see the User Account Control screen, click **Continue**.



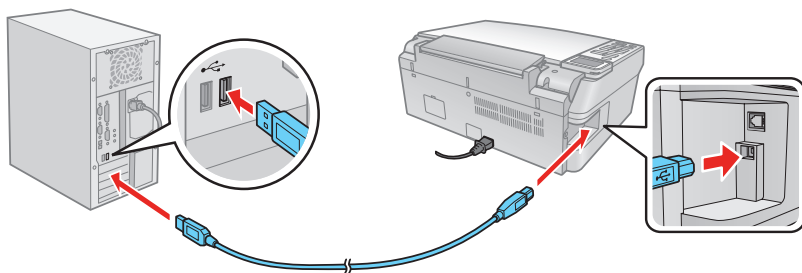
- 3 Click **Install** and follow the on-screen instructions.



- 4 When you see this screen, select **Install driver for direct USB connection** and then click **Next**.



- 5** When prompted, connect a USB cable. Use any open USB port on your computer.



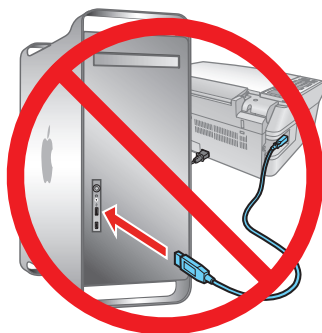
**Note:** If installation doesn't continue after a moment, make sure you securely connected and turned on the NX510 Series.

- 6** Follow the on-screen instructions to install the rest of the software and register your NX510 Series.
- 7** When you're done, remove the CD.

You're ready to print, copy, and scan! See your *Quick Guide* or on-screen *Epson Information Center*.


## Macintosh®

- 1** Make sure the NX510 Series is **NOT CONNECTED** to your computer.



- 2** Insert the NX510 Series software CD.



- 3** Double-click the  **Epson** icon.

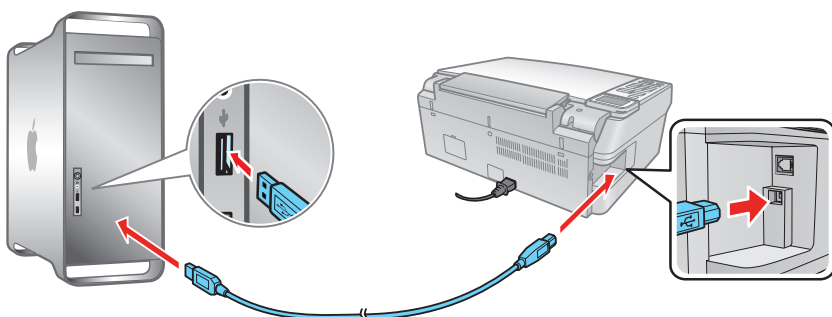
- 4** Click **Install** and follow the on-screen instructions.



- 5** When you see this screen, select **Install driver for direct USB connection** and then click **Next**.



- 6** When prompted, connect a USB cable. Use any open USB port on your computer. Make sure the NX510 Series is securely connected and turned on.



If you're using Mac OS X 10.5.x, skip to step 9.

If you're using Mac OS X 10.3.9 or 10.4.11, continue with the next step.

- 7** When you see this screen, click **Add Printer**. Follow the steps on the right side of the screen to add the NX510 Series.



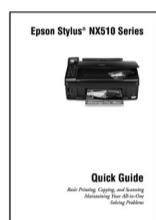
- 8** Click **Next** again, if necessary.
- 9** Follow the on-screen instructions to install the rest of the software and register your NX510 Series.
- 10** When you're done, eject the CD.

You're ready to print, copy, and scan! See your *Quick Guide* or on-screen *Epson Information Center*.

## Any questions?

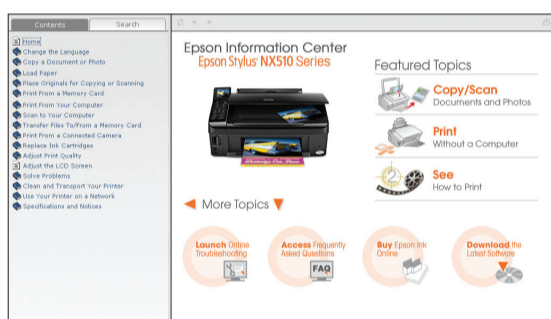
### Quick Guide

Basic instructions for printing, copying, and scanning.



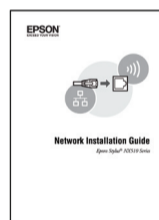
### On-screen Epson Information Center

Click the desktop shortcut for easy access to the NX510 Series user's guide, FAQs, online troubleshooting advice, and software downloads. You can also purchase paper and ink.



### Network Installation Guide and Video

Instructions on configuring the NX510 Series for a network. For a video tutorial and other information about setting up a wireless network, go to: [epson.com/support/wireless](http://epson.com/support/wireless)



### On-screen help with your software

Select **Help** or **?** when you're using your software.

### Epson Technical Support

#### Internet Support

Visit Epson's support website at [epson.com/support](http://epson.com/support) and select your product for solutions to common problems. You can download drivers and documentation, get FAQs and troubleshooting advice, or e-mail Epson with your questions.

#### Speak to a Support Representative

Call (562) 276-4382 (U.S.) or (905) 709-3839 (Canada), 6 AM to 6 PM, Pacific Time, Monday through Friday. Days and hours of support are subject to change without notice. Toll or long distance charges may apply.

### Software Technical Support

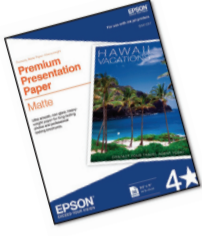
ArcSoft Print Creations™  
[www.arcsoft.com/support](http://www.arcsoft.com/support)

# Need paper and ink?

Try Epson paper with DURABrite® Ultra Ink for professional results. For the right supplies at the right time, you can purchase them at Epson Supplies Central<sup>SM</sup> at [www.epson.com/ink3](http://www.epson.com/ink3) (U.S. sales) or [www.epson.ca](http://www.epson.ca) (Canadian sales). You can also purchase supplies from an Epson authorized reseller. To find the nearest one, call 800-GO-EPSON (800-463-7766).

## Genuine Epson Paper

Epson offers a wide variety of papers to meet your needs; visit Epson Supplies Central for more information.



### Premium Presentation Paper Matte

Ultra smooth, non-glare, heavy-weight paper for long-lasting photos and professional looking brochures.

## Genuine Epson Inks



Look for the numbers below to find your cartridges. It's as easy as remembering your number!



Color	Standard-capacity	High-capacity	Extra High-capacity
● Black	69	68	97
● Cyan	69	68	—
● Magenta	69	68	—
● Yellow	69	68	—

**Note:** The 69 Standard-capacity ink cartridges are available online and from Epson authorized resellers.

\* 1-year limited warranty to all purchasers. For California and Québec residents, failure to submit this product registration form does not diminish your warranty rights.

Epson is a registered trademark, Epson Exceed Your Vision is a registered logomark, and Supplies Central is a service mark of Seiko Epson Corporation. DURABrite is a registered trademark and Epson Stylus is a registered trademark of Epson America, Inc.

General Notice: Other product names used herein are for identification purposes only and may be trademarks of their respective owners. Epson disclaims any and all rights in those marks.

This information is subject to change without notice.

© 2009 Epson America, Inc. 2/09

CPD-27298

Cut out the card to the right and keep it with you when purchasing replacement ink cartridges.

### Epson Stylus® NX510 Series Ink Cartridges

Color	Standard-capacity	High-capacity	Extra High-capacity
● Black	69	68	97
● Cyan	69	68	—
● Magenta	69	68	—
● Yellow	69	68	—